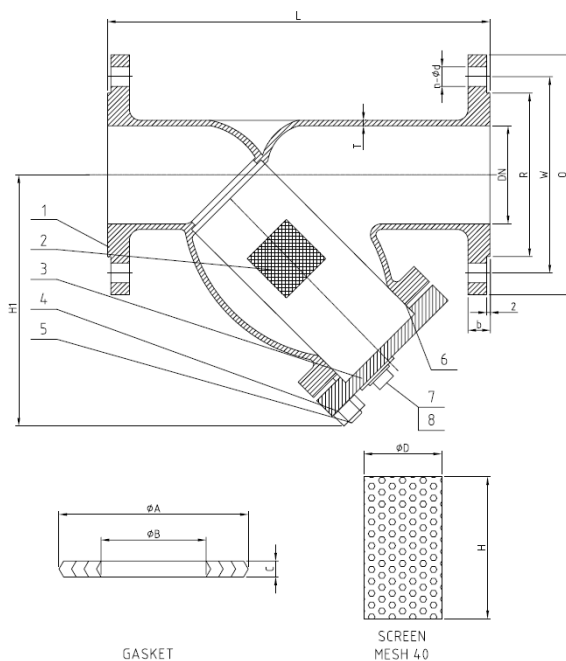


**ASME B16.34**





Item	Description	Material of construction		
1	Body	ASTM A216 Gr.WCB	CF8	CF8M
2	Screen	ASTM A276 Type 316		
3	Cover	ASTM A216 Gr.WCB	CF8	CF8M
4	Cover Bolts	ASTM A193 GR.B7	8M	
5	Cover Bolts Nuts	ASTM A194 GR.2H	B8M	
6	Gasket	316 + Graphite		
7	Plug	ASTM A105	316	

Size	150			300			600		
	L	H	Kg	L	H	Kg	L	H	Kg
2"	203	145	12	267	170	15	292	185	35
2.5"	216	183	18	292	185	18	330	200	40
3"	241	206	21	318	235	35	356	250	48
4"	292	228	32	356	290	51	432	300	90
6"	406	329	48	445	375	92	559	415	220
8"	495	440	105	559	450	182	660	490	360
10"	622	507	169	622	575	285	787	595	500
12"	699	594	215	711	665	307	838	680	781

DESIGN STANDARDS	
Valves design	ASME B16.34
Face to Face Dimensions	ASME B16.10
End Flanged Dimensions	ASME B16.5
TESTS AND CERTIFICATES	
Test	API 598