



PLATINUM SAMANDY

Platinum Samandy – “Helping clients focus on what they do best.”

Who we are:

Platinum Samandy is an integrated upstream industrial facilities management company. Established and registered in Nigeria with offices in Ghana, USA and South Korea, the company's vision is to provide world-class Industrial facility management services.

Platinum Samandy's operational philosophy is to be the best at what they do, provide clients with world-class industrial facility management services and allow them to focus on what they do best. Clients recognize that focusing on their core competencies and outsourcing other functions to Platinum Samandy improves chances for success.

Platinum Samandy understands that employees' creativity offers clients a strong competitive advantage. A workforce with the ability to solve new problems, take on new challenges, adapt to change, increase skills and performance helps clients surpass the competition. Platinum Samandy Group provides its staff, engineers and professional technicians with the competitive technology, effective work processes, necessary skills and knowledge to help clients compete and win.

Technicians are highly trained and follow well-documented risk assessments and procedures to ensure every project meets the highest quality and safety standards. All technicians are safety certified and undergo extensive training to ensure all activities are conducted without incident and with little or minimal environmental impact in the areas where we operate.

Core areas of expertise:

- HVAC – Air Conditioning Maintenance / Repairs. Package unit maintenance, repairs, inspection services
- Crane maintenance and certification
- Flange management
- Rope access services
- Valve maintenance, certification and safety documentation
- Oil discharge monitoring systems
- Fabrication and machining
- Offshore support
- Specialized staffing services
- Procurement
- Energy sector support services

Platinum Samandy partners and contractors have been thoroughly pre-qualified for their vision, values and operational discipline. Alliance partners share the company's standards and ideals to provide clients with the highest quality services.

Platinum Samandy's vision of a professional organization and a personnel management system that ensures success is the strongest approach to facilities management.

Platinum Samandy business divisions include:

- Platinum Samandy Ventures (PSV)
- Platinum Samandy Marine (PSM)
- Platinum Samandy Energy (PSE)

PLATINUM SAMANDY VENTURES (PSV)

PLATINUM SAMANDY VENTURES (PSV):

PSV is a fully fledged oil service company offering a variety of value-added services to the industry and operators. PSV's vision is to provide the highest quality services in a timely manner, allowing clients to maintain optimum production and the greatest efficiencies.

PSV offers:

Heating, Ventilating, and Air Conditioning (HVAC):

PSV is the sole agent for Hi-Air Brand HVAC equipment in the West Africa Sub-Region. In addition to Hi-Air HVAC, PSV also maintains and services for Carrier, MavAir and DWD International. PSV also provides manpower services for operations and maintenance (preventive and corrective) of HVAC systems on board FPSO, LNG and other production facilities and platforms. PSV's experienced engineers are on site 24 hours a day, seven days a week. HVAC spare parts are quickly available at competitive prices, as needed.



CRANE MAINTENANCE & CERTIFICATION - Material Handling Equipment (MHE):

Working with manufacturing partners of industrial lifting and personnel transfer equipment, PSV offers manpower staffing services for operations and maintenance (preventive and corrective) of cranes and lifting devices MHE on production and manufacturing facilities, offshore and onshore. PSV provides regulatory inspection, maintenance and certification services, as well as mechanics and operators for cranes and MHEs. PSV is the sole representative of Asian equipment manufacturers in Nigeria and also services maintains and certifies cranes and lifting devices.



FLANGE MANAGEMENT:

PSV provides flange management services for the offshore industries. PSV engineers provide the procedures, recorders, equipment and qualifications to ensure the highest quality of flange joints including flange deformation and relaxation, gasket yielding or creeping, compression capacity, diffusion leakage capacity or the effect on bolt tension.



ROPE ACCESS SERVICES:

PSV's IRATA-certified technicians are capable and experienced to undertake all tasks in the safest manner possible. PSV provides specialized solutions for elevated and difficult to reach locations including inspection, maintenance, industrial and civil services. Versatile IRATA-certified rope access engineers and technicians, working with state of the art equipment, allow more surface area to be inspected in less time. Engineers quickly assess problem areas uncovered by the field observations and accurately define subsequent work in an efficient and cost saving manner.

Rope access services include:

- Inspection
- Confined space and tank entry
- Rescue operations
- Rescue planning
- Tank inspections
- Leak tracing
- Marine inspections
- Vessel surveys

All inspections include:

- Assess general condition of tanks
- Coating condition
- Pre dry dock surveys
- Anode assessment
- Structural inspection



Full reporting and surveying is in accordance with class requirements; complete print and digital reports are distributed to the relevant authorities.

- Offshore Inspections: PSV rope access technicians are able to inspect areas -- with exceptional results and minimal down time -- that once were achievable only during dry docking including: derricks, pontoon columns, jack-up legs, sub-structures, risers and anchor brackets. All Inspections are completed consistent with class societies and specifications. All PSV inspectors are ASNT Level II Certified.

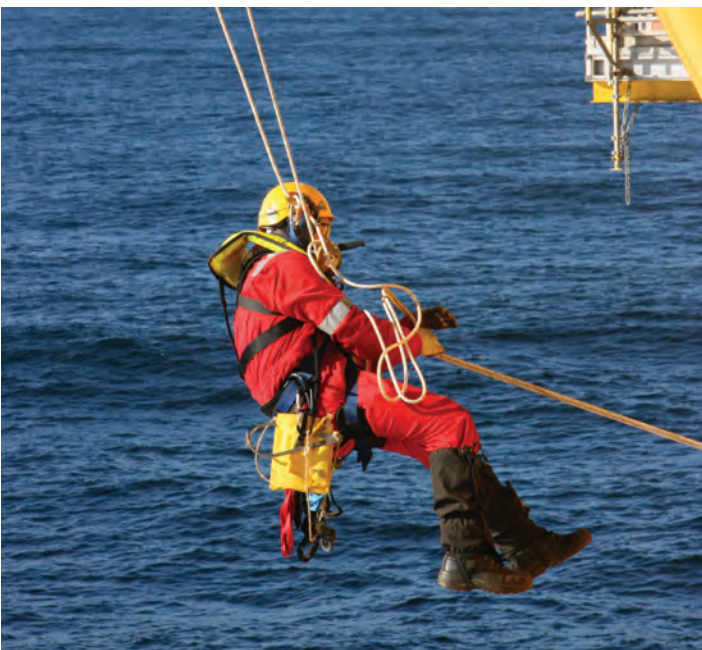
Offshore Services include:

- Photographic surveys
- Video and visual surveys
- Ultrasonic thickness measurement
- Bolt, magnetic particle, eddy current, weld and coatings inspections

PSV lifting gear inspection services do not require staging or scaffolding to access difficult locations. Lifting gear inspections are compliant with Lifting Operations and Lifting Equipment Regulations of 1998 (LOLER), ensuring equipment integrity and traceability.

Rope Access Offshore/ Marine Maintenance services:

- Flare Boom maintenance
- Derrick maintenance
- Bolt assessment and repair
- Electrical installations and repairs
- Welding, cutting and burning
- UHP water blasting
- Dry grit blasting
- Painting and coating repairs
- Ballast and cargo tank refurbishment
- Tank cleaning
- Anode replacement
- Valve refurbishment



PSV maintenance teams have more than 10 years experience on drill rigs and FPSO's and are certified for rope access, rigging and lifting, confined space entry and rescues, fire and gas maintenance and bolt management. Arrangements for additional services may be made for individual client needs.

Painting services: PSV's experience in gaining access and working in a variety of locations enables it to offer the most efficient and cost-effective solutions for most locations including FPSO's and VLCC ballast tanks, flare stacks, jack up legs and helidecks. PSV offers painting preparation and services without the need of traditional scaffolding minimizing downtime and interruption of routine operation. PSV specialists manage coating projects and work to client stipulated standards. PSV inspectors are certified through NACE and provide the highest quality solutions to projects.

Rigging Services: Include mooring of FPSO's, riser repair pulling and repair, platform and pipeline commissioning, and problem height rigging solutions.

VALVE MAINTENANCE – Inspection, greasing, testing, repairs, certification, documentation and work planning:

PSV specializes in the sale, testing, repair, inspection, servicing, modification, calibration and certification of safety valves and relief valves. Services may include greasing and maintenance of critical valves as well as prioritizing and managing compliance data for critical valves. PSV also offers ongoing maintenance services for hydraulic, pneumatic, manual, solenoid and motor-operated, as well as blow-down valves; pressure regulated (PSV's), actuators and vacuum breakers.

PSV provides a full range of valve management, training, servicing and testing facilities to valve users that reduce clients' overall maintenance costs.

Safety valve test equipment may be customized or includes:

- Flanged or screwed connection
- Gas and-or liquid
- Manual or automatic clamping
- Safety interlock systems
- Test pressures up to 10,000 psi (690 bar)

Clients may also use PSV on-site equipment at various field locations or safety valve tests. Available equipment includes:

- Test benches, equipment and vices for pressure and leakage testing
- Solutions for safety valve testing, control valve test stands and setups for shut off / shut down valve testing
- In-situ testing
- Set pressure verification without removing valve from the process line
- Suitable for most spring-operated safety relief valves



VALVE CERTIFICATION AND SAFETY DOCUMENTATION:

Through PSV continuing education program, factory training and quality control programs, customers can be assured that each valve is certified to the highest standards for performance, safety and reliability. PSV's professional staff assists customers to determine appropriate products for their unique applications and most items are available via quick shipment from our network partners. PSV guarantees applications and timely order follow-up. Valve products include: gate, globe, butterfly, actuators, turbine control and stop.

Valve certification and safety services include:

- Complete range of traditional heavy machining, tool and die, and welding equipment
- Two 10,000 lbs. cranes
- High tolerance horizontal jig boring, 3" bar
- High tolerance vertical jig boring
- Lathe capacity, 40" X 168"
- Surface grinder, 10" X 15"
- Vertical turret, 54" swing with 48" under rail
- Hydrostatic testing of valves and pump casings
- Large capacity 60 ton H frame press
- Comprehensive rebuilds and bonnet repairs
- Full dimensional inspections and reports
- Reverse engineering and parts manufacturing
- Blast cleaning and degreasing
- Certified welding
- Corrosion and wear coatings
- NDE inspections and testing
- General fabrication
- M.I.G., T.I.G., stick and brazing
- Plasma cutting
- Machine tooling and fixturing
- Field laser alignment and equipment start up



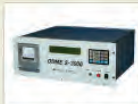
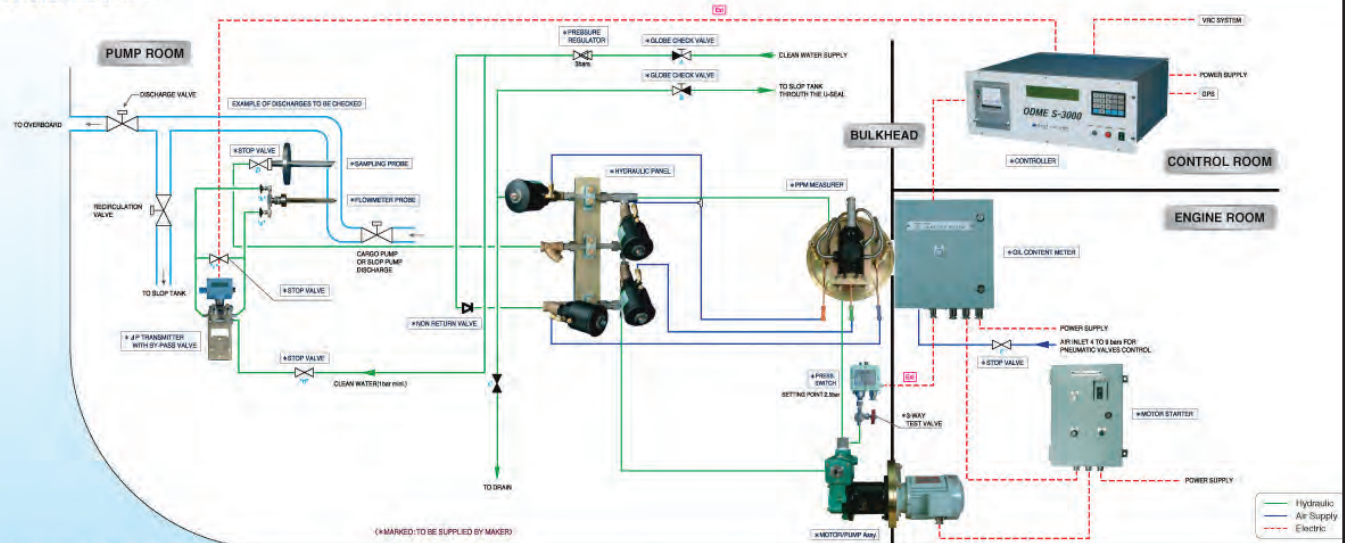
PLATINUM SAMANDY VENTURES (PSV)

OIL DISCHARGE MONITORING EQUIPMENT (ODME):

ODME systems must maintain compliance with SOLAS requirements for offshore discharge from ships and vessels. PSV is the sole representative in West Africa for SEIL series ODME equipment and provides ship owners problem solving maintenance services and technical expertise for ODME systems. Working remotely via partner networks, PSV provides clients with spare part sales, supply and supervision of system upgrades, service visits to vessels and annual inspections.

IMO RES. MEPC.108(49) ODME S-3000

PRODUCT OVERVIEW >>>>



Controller

- 440 x 360 x 177, 12kg
- 16 bit CPU with Intel 80C196KC
- 40 x 4 Characters LCD Display
- 24 column matrix shuttle printer
- Membrane keypad



Oil Content Meter

- 400 x 400 x 300, 32kg
- Scattered I.R. Light method
- Multi cell sensor (Si-photodiode)
- Pneumatic solenoid vlv.
- Protected vibration



Motor Starter

- 250 x 300 x 180, 10kg
- 440V, 220V/110V transformer
- Overload relay



Pressure Switch

- 151 x 151 x 130, 2kg
- 0-16 bar
- Automatic pump shut-down



Motor/Pump Assy.

- 2.2kW 3A motor
- Centrifugal type pump
- Class certified bulkhead penetration



PPM Measurer

- 360 x 283 x 180, 30kg
- 4 optical fibers
- Self cleaning system
- Class certified bulkhead penetration plate



Hydraulic Panel

- 600 x 404 x 580, 15kg
- 4 pneumatic valve
- Sample water filter
- 2-8 bar air supply



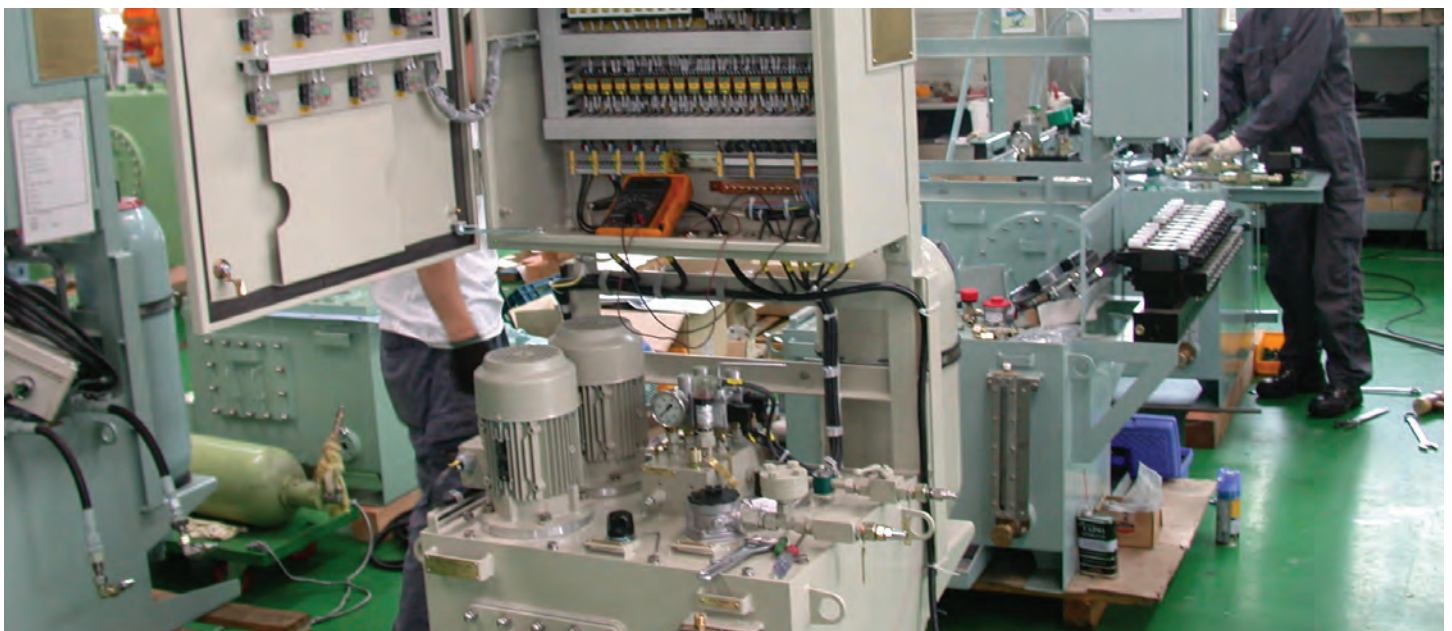
Sampling Probe

- 5K 65A flange



Flowmeter & Probe

- 311 x 104 x 102, 9kg
- Pilot-tube type probe
- Intrinsically safe
- Below ±1% accuracy



PLATINUM SAMANDY VENTURES (PSV)

FABRICATION AND MACHINING:

The facilities in West Africa and South Korea include the PSV fabrication yard and training facility. Under development in Nigeria is a factory to build onshore modular units for the local power and refinery industries. Located next to Port Harcourt, PSV is at the core of drilling platforms with direct access to oil fields at sea.

Machining, metalizing and re-machining services in West Africa and South Korea include but are not limited to flanges; heat exchangers, valves; shafts; internal and external threading; line boring; machine cutting and beveling pipes; studs and grouting.

STAFFING SERVICES:

PSV's operational understanding of the petroleum industry's upstream sector and its network of partners uniquely places it in a position to select, recruit and offer specialized personnel for local and international clients. PSV offers short term specialized labor for turn-key projects, turn around maintenance, project management and more. PSV's specialized personnel include OEM representatives, fabrication yard inspectors, construction inspectors, engineers, planners, startup specialists, HUC specialists, and HSE professionals. Arrangements may be made quickly for short-term projects with coordinated assistance from PSV protocol officers for visa processing and travel arrangements.

Contact the PSV help desk and client services executives for additional information at:

platinumsamandy@platinumsamandy.com or visit our web site at www.platinumsamandy.com



PROCUREMENT:

PSV is active in the procurement and supply of spare parts and heavy equipment for the oil and gas, power, construction and electrical industries including:

- Fire protection and safety equipment: extinguishers, gas and smoke detectors, PPE
- Waterless fire-suppression systems
- Safety shoes and hats
- Industrial pumps, valves and flow meters
- Mechanical seals, air filters for FPSO turbines
- Aerial work platforms
- Offshore crane and mooring systems spare parts
- Offshore and marine elevators spare parts
- Offshore HVAC systems spare parts
- Rig and FPSO equipment general spare parts sourcing
- FPSO Air conditioner and cooling units spare parts

PLATINUM SAMANDY MARINE (PSM)



PLATINUM SAMANDY MARINE (PSM)

Platinum Samandy Marine (PSM) offshore support services consist of a fleet of medium and large vessels operated and managed by PSM and available for the following services:

- Anchor handling, towing, supply (AHTS)
- Multi-purpose support vessels
- Cable laying and repair
- Ships and fast crew support vessels
- Clean product tankers
- LPG carriers
- Container and bulk carriers

PSM also provides support for oil and gas field exploration, construction and production:

- FPSO towing and mooring
- Drilling rig and equipment towing and anchor-handling
- Specialized services including pipe laying, cable laying, pollution and fire control

For more information, contact: platinumsamandy@platinumsamandy.com or visit our web site at www.platinumsamandy.com



PLATINUM SAMANDY ENERGY (PSE)

Platinum Samandy Energy (PSE), operating primarily in Nigeria, evolved to handle all business related to the Power sector, specifically customer support and operations in high to medium voltage power evacuation. PSE's goal is to offer an integrated solution in the form of a power island. PSE is active in the transmission and distribution networks to ensure consistent power to public and private sector clients.

PSE has established itself through large projects in Nigeria that successfully augmented electricity distribution in the country, including construction of a 330/132KV switchyard with associated switchgears and constructing double circuit 330/132KV overhead transmission lines. PSE is also advising local contractors during efforts to reinforce a transmission substation in the southern region of Nigeria with 1 Nos 150MVA 330/132/33KV transformer. The double circuit 132KV transmission lines will be erected between various transmission stations in the nearby area and provide consistent power supply within the region. Other projects include construction of numerous 15 MVA 33/11 KVA injection substations in different parts of the country as part of the overall reform to Nigeria's power sector.

PSE project management teams have operated in difficult terrains and developed specialized strategies to obtain successful project execution. In Ghana and Nigeria for example, PSE experts provide guidance on terrain, local partners, high to low voltage equipment suppliers and project sustainability.

PSE project teams are available for the following:

- Engineering (Civil and electrical designs)
- Manufacturing (Production of electrical components to specification)
- Civil (Implementation of structural works on site)
- Electrical Installation (Implementation of electrical works)
- Instrumentation and control (Cable routing and connectivity)
- Testing and commissioning (Operation, performance audit).

PSE's success is built on four key business strategies: professionalism, timely project execution, environmental safety and customer support and services. Solid and long standing relationships with PSE network partners ensure clients receive fair and reasonable pricing, on-time delivery and the highest quality products.

PSE is committed to the environment and has sought involvement in renewable energy project including promoting the necessity for solar powered boreholes in northern Nigeria. The successful completion of one of these projects resulted in increasing the water supply to a community of 60,000 people. Need more detail here if possible.

For more information, contact: platinumsamandy@platinumsamandy.com or visit our web site at www.platinumsamandy.com



OUR LOCATIONS ARE:

Lagos Office:

5th Floor, Coscharis Plaza

64 Adeola Odeku Street

Victoria Island, Lagos, Nigeria

Tel: +234.807.407.2031, +234.1.882.0921-3

Fax: +234.1.463.0014

Mailbox:

P.O Box 52270 Falomo, Ikoyi, Lagos, Nigeria

Port Harcourt:

35 Nta Road, Opposite Pin Place

Mgbuoba, Port Harcourt, Nigeria

Tel: +234.807.407.2031

Fax: +234.1.463.0015

Ghana Office:

P.O Box CT 1043 Cantonments

Accra, Ghana

Tel: 233.244.993.770

US Office:

8616 La Tijera Blvd., Suite 304

Los Angeles, CA 90045

Tel: +1.310.877.5226

Fax: +1.310.507.2037

Mailbox:

P.O Box 882122 Los Angeles, CA 90009

UK Office:

32 Forest Court, The Forest

Snaresbrook, E.11

Tel/Fax: +44.709.231.1788

Gabon Office

Platinum Samandy Ventures

B.P. 1925

Port - Gentil

Gabon

SOME OF OUR CLIENTS ARE:

Shell Petroleum Development Co. of Nigeria - Sea Eagle FPSO
Shell Nigeria Exploration and Production Co of Nigeria - Bonga FPSO
Chevron Star Deep (Nigeria) - Agbami FPSO
Chevron Escravos, EGP3, EGP4, EGT
Total Fina Elf (Nigeria) - Akpo FPSO
Agip (Nigeria) - Abo FPSO/Mystra FPSO
ExxonMobil (Nigeria) - Erha FPSO/Falcon FPSO
Nigeria Liquefied Natural Gas Co. Ltd, Bonny Island, Port Harcourt, - LNG
ExxonMobil (Angola) - Kizomba A/Kizomba B
Total Fina Elf (Angola) - Girrasol FPSO
Total Fina Elf (Nigeria) - Usan FPSO
Total Fina Elf (Angola) - Pazflor FPSO
Sonagol (Angola) - Gimboa FPSO/Xikomba FPSO/Angola LNG
Vaalco Energy (Gabon) - Pertreleo Nautipa FPSO
Exxon Mobil (Equatorial Guinea) - Serpentina FPSO
Tema Oil Refinery (Ghana)
West African Gas Pipeline Company
Kaduna Refining and Petrochemical Co. Ltd.
Port Harcourt Refining Co. Ltd.
Power Holding Company of Nigeria (PHCN)
Volta River Authority (VRA) - Ghana
Warri Refining and Petrochemical Co. Ltd, Warri
Eleme Petrochemical Co. Ltd, Port Harcourt, e.t.c

Website: www.platinumsamandy.com
Email: platinumsamandy@platinumsamandy.com