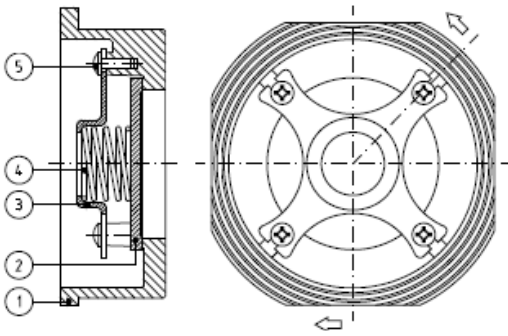
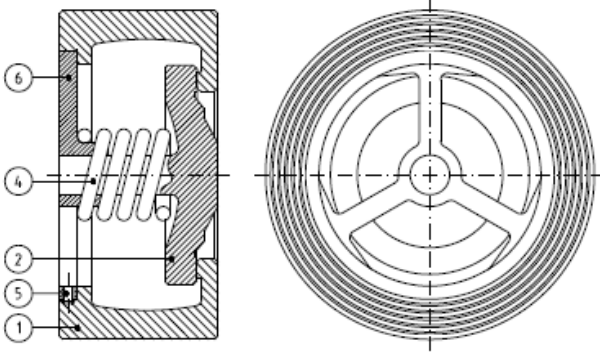




DN 15 to DN 100/ NPS 1/2" to 4"

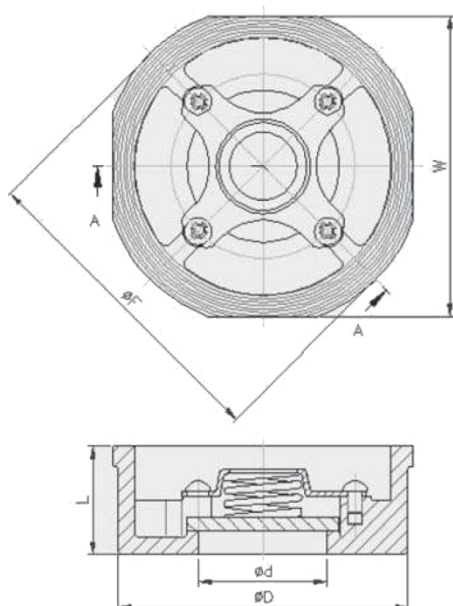


DN 125 to DN 300/ NPS 5" to 12"

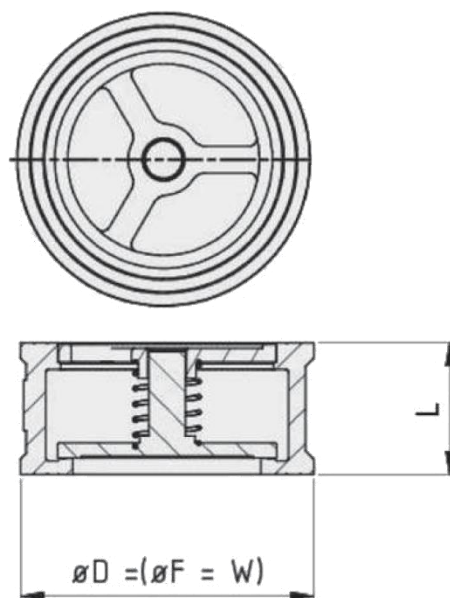


Item	Description	Material
1	Body	1.4408 (CF8M)
2	Disc	1.4436 (AISI 316)
3	Cap	1.4408
4	Spring	AISI 316
5	Screw	AISI 316
6	Insert	1.4408
-	Seals	Metal seated. Under request: NBR, EPDM, FMP (Viton), PTFE

DN 15 to DN 100/ NPS 1/2" to 4"



DN 125 to DN 300/ NPS 5" to 12"



### DIMENSIONS

### FITTING FLANGES

DN	ød	øD	øF	W	L	Weight	PN6	PN10	PN16	PN25	PN40	ANSI150
15 (1/2")	15	43	53	43	16	0.10	-	✓	✓	✓	✓	-
20 (3/4")	20	53	63	53	19	0.16	✓	✓	✓	✓	✓	-
25 (1")	25	63	73	63	22	0.28	✓	✓	✓	✓	✓	-
32 (1 1/4")	30	75	84	75	28	0.52	✓	✓	✓	✓	✓	-
40 (1 1/2")	38	86	94	86	32	0.70	-	✓	✓	✓	✓	-
50 (2")	47	95	107	95	40	1.10	✓	✓	✓	✓	✓	✓
65 (2 1/2")	62	115	126	115	46	1.58	✓	✓	✓	✓	✓	-
80 (3")	77	131	145	131	50	1.78	✓	✓	✓	✓	✓	✓
100 (4")	96	150	164	150	60	3.30	✓	✓	✓	✓	✓	✓
125 (5")	122	190.5	190.5	190.5	90	8.00	-	✓	✓	✓	✓	✓
150 (6")	148	219	219	219	106	12.00	-	✓	✓	✓	✓	✓
200 (8")	200	282	282	282	140	22.00	-	✓	✓	✓	✓	✓
250 (10")	250	340	340	340	145	35.00	-	-	-	✓	✓	✓
300 (12")	300	400	400	400	160	45.00	-	-	-	✓	✓	✓

(\* Dimensions in mm and weight in kg  
For other sizes consult to the technical department.

DESIGN STANDARDS	
GENERAL CHARACTERISTICS	
Rating	PN 6 to PN 40 (ANSI 150)
Flange connection	EN-1092-1 B1
Face to face dimension	DIN EN 558-1, row 49
Temperature range	- 10°C to 300°C (depending on the seal and spring material)

Opening pressures in mbar									
Valve size	Direction of the fluid			Without spring	Valve size	Direction of the fluid			Without spring
	← →	↓	↑	↑		← →	↓	↑	↑
15	25	30	20	2.5	80	25	30	20	k.W.
20	25	30	20	2.5	100	25	30	20	k.W.
25	25	30	20	3	125	22	30	10	k.W.
32	25	30	20	3.5	150	22	30	10	k.W.
40	25	30	20	3.5	200	22	30	10	k.W.
50	25	30	20	4	250	22	30	10	k.W.
65	25	30	20	k.W.	300	22	30	10	k.W.

Differential pressures with zero flow for standard and high temperature springs.

→ Flow direction

Kv VALUES IN m <sup>3</sup> /h			
DN	Kv	DN	Kv
15	2	80	83
20	7	100	127
25	13	125	183
32	17	150	258
40	23	200	410
50	48	250	698
65	55	300	732

Pressure-temperature	
Metal to metal	-10 to +300°C
NBR	-10 to + 90°C
EPDM	-10 to +120°C
FPM (Viton)	-10 to + 150°C
PTFE	-10 to + 200°C